

# Countryside Crime



By Christopher Langman

**Countryside Crime** is sometimes called **Rural Crime**.

A burglar or criminal may find houses, buildings or equipment that are not close together easier to attack.

To protect **equipment**:



Put equipment and vehicles out of sight



Remove valuable gadgets and tools from the vehicle



Lock vehicle and remove keys

Think about making it harder for criminals to get on to your land:



Gates with secure hinges and locks



Strong fences and hedges



Security lights



Burglar alarms



CCTV

**Animals** can be valuable (cost a lot of money). Consider ways of keeping them safe:



Keep your boundaries, fences and hedges in good condition



Tag or mark your animals with a special code



Take photos of your animals

When someone starts a fire on purpose it is called **Arson**. To help reduce the risks of arson, store these things safely:



Hay and straw



Fuel and diesel

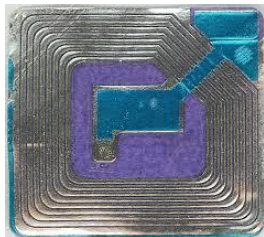


Fertilisers and pesticides

Farm equipment, tools and gadgets that have **security markings** on are harder for a burglar to resell and easier to return to you if found. You may want to use :



Engraving



Tagging



Invisible (UV) pen marking



Permanent pen marking



Smartwater or similar forensic marking

You should also keep a record of all the serial numbers.

**If you would like more information:**

**Rural Matters campaign**

[www.warwickshire.police.uk/ruralmatters](http://www.warwickshire.police.uk/ruralmatters)

**Warwickshire Rural Watch**

<http://www.warwickshireruralwatch.co.uk/>

**Useful contacts or to report a crime or suspicious behaviour:**

Police SNT  
(Safer Neighbourhood Team) Ask for rural crime prevention  
or Rural Crime advice  
Co-ordinator (Council)

Police

999 (Emergency)

101 (Non-emergency)

Crimestoppers

0800 555 111